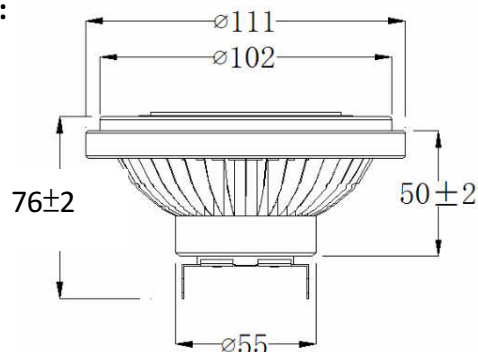




LED AR111 (With Drive)



Dimension:



Specification

Model No.	LOM-AR111C13F8-AX	LOM-AR111N13F8-AX	LOM-AR111W13F8-AX
Input Voltage	12V DC/AC	12V DC/AC	12V DC/AC
Rated Power	13 W \pm 10%	13W \pm 10%	13W \pm 10%
Total Lumens	1300 lm	1150 lm	1150 lm
Lumens Efficiency	100 lm/W	90 lm/W	90 lm/W
Color Temp.	6000 \pm 500K	4000 \pm 500K	3000 \pm 500K
CRI	80	80	80
Operating Temp.	-25°C~40°C	-25°C~40°C	-25°C~40°C
Base	GU53	GU53	GU53
Life Time	\geq 30000 hrs	\geq 30000 hrs	\geq 30000 hrs
Beam angle	A1:25°/A2:45°	A1:25°/A2:45°	A1:25°/A2:45°
Dimensions	111(D) X 67(H) mm	111(D) X 67(H) mm	111(D) X 67(H) mm
Weight	180 \pm 20g	180 \pm 20g	180 \pm 20g

Remarks

1. The tolerance of luminous flux is \pm 10%.
2. The dimension tolerance is \pm 5mm.
3. Laster Tech Corporation LTD. All rights reserved. Product specifications are subject to change without notice.

Installation Instruction

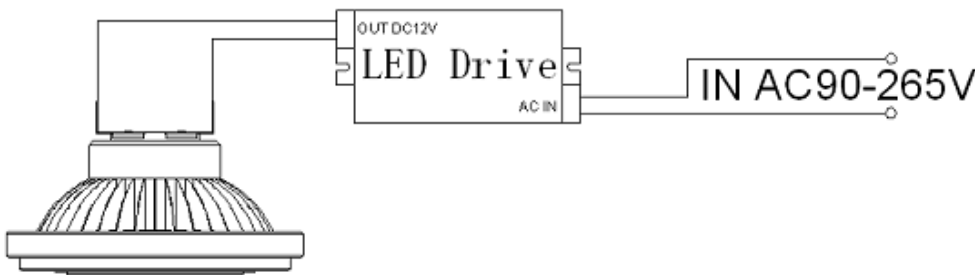
With Driver installation:

1. The product out of the box after picking up, then firstly power distribution, power outlet at each end.
2. With a pin for DC12V output line. Two PIN to plug in this line of GU53 AR111 lamp socket.
3. Without pin bring the cable to supply mains.
4. After the above installed, placed on a dedicated AR111 lamps, and fixed

Without Driver installation:

1. First look at the drive power is AC90-265V input or not, output whether DC12V. Then confirms inputs and output.
2. The power supply output connects to the AR111 GU53 lamp holder of two PIN on. Without check the positive and negative points.
3. Then put input end to the supply mains.
4. After the above installed, placed on a dedicated AR111 lamps, and fixed

Wring Diagram



Attention

1. AR111 is 12V low voltage product input is not connected directly to the supply mains.
2. AR111 not be compatible with traditional ballast, so be sure to remove the original when alternative ballast, LED driver power supply replaced.