

LON-ECO

Industrial LED Hi-bay/ Flood light / Spot light

Standard Series

45W/60W/85W/105W/135W/150W/210W/270W/300W

Professional Series

200W/220W/250W/280W/420W/560W

Advanced Series

220W/250W/280W/420W/560W


-Smart Control Enabled-





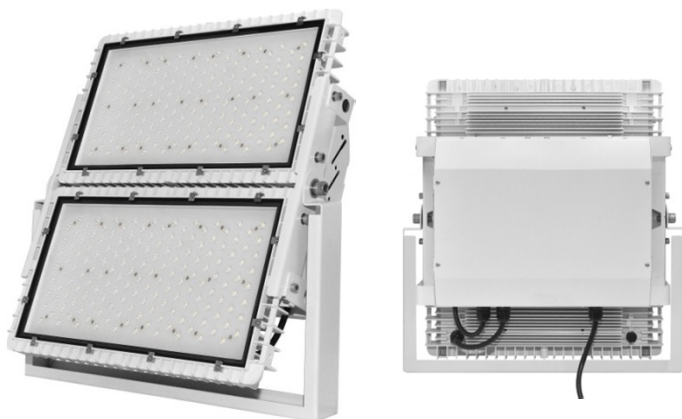
LON-ECO Standard Compact Series

45W~150W
CRI>=82, Up to 106 lm/w
 Smart control available

LON-ECO Series (45W~150W)						
Model No.	LON-E10C 045SOxxxx8	LON-E10C 060SOxxxx8	LON-E10C 085SOxxxx8	LON-E10C 105SOxxxx8	LON-E10C 135SOxxxx8	LON-E10C 150SOxxxx8
System Watts	45W±5%	60W±5%	85W±5%	105W±5%	135W±5%	150W±5%
LED Chip	OSRAM 					
CRI	≥ 80					
LED nos.	64pcs	96pcs	128pcs	160pcs		
Total Lumens (Cool-White)	≥4,700 lm ≥106 lm/w	≥6,300 lm ≥106 lm/w	≥9,010 lm ≥106 lm/w	≥11,130 lm ≥106 lm/w	≥14,310 lm ≥106 lm/w	≥15,900 lm ≥106 lm/w
Drivers /Input	MeanWell CEN-60 IP67, PF>0.98		MeanWell CEN-100 IP67,PF>0.98		MeanWell HLG-150H, IP67, 1-10V Dimming,PF>0.98	
AC Input	Max. AC 90~305V					
Optional Driver	HLG-40H, 1-10V Dimmable	HLG-60H 1-10V Dimmable	HLG-100H or HLG-150H 1-10V Dimmable, PF>0.98		N/A	
Dimming	N/A (Standard driver) 1-10V (Optional driver)				1-10V	
Operation Temp.	-40°C~40°C, indoors and outdoors					
IP Rating	IP66					
Beam Angles	15°/30°/50°/80°/90°/110° (90°/110° Optional), PC Lens					
Color Temp.	5200~6200K(CW)/3500~4500K(NW)/2500~3500K(WW)					
Dimensions	387x220x82mm (include standard bracket)					
Weight	3.7~4.2kg (include driver and SPHC bracket)					
Material	Die-cast Aluminum Heat-Sink, White/Black painting Tempered proof glass cover SPHC Bracket Stainless 30° Tilt bracket (Optional)					
Surge Protection	10KA SPD (120-277V or 347-480V AC) (Optional)					
Smart Controlling	DALI supported via Meanwell DAP-04 DALI converter (optional) Bluetooth wireless supported via Neotroni BlueTech controller (optional)					
Warranty	5 Years, Life Span> =50,000 hrs					
COO	Made in Taiwan					
Certification	cUL/CE/CNS/DLC/Lighting Facts, ROHS					


Remarks

- 1.The tolerance of luminous flux is ±10%.
- 2.The dimension tolerance is ±5mm.
- 3.The appearance and specifications of the product may be modified for improvement without notice.
- 4.All parameters of products are based on the measurement of Laster Tech laboratory.



LON-ECO Standard Twin Series

210W~300W
 CRI>82, Up to 106 lm/w
 Smart control available

LON-ECO Twin Series (210W/270W/300W)			
Model No.	LON-E10C210SOxxxx8	LON-E10C270SOxxxx8	LON-E10C300SOxxxx8
System Watts	210W±5%	270W±5%	300W±5%
LED Chips	OSRAM 		
CRI	≥ 80		
LED nos.	320pcs		
Total Luminous flux (Cool white)	≥22,000 lm ≥106 lm/w	≥28,000 lm ≥106lm/w	≥30,600 lm ≥106lm/w
Driver	MeanWell CEN-100 IP67,AC 90-305V, PF>0.98 x2	MeanWell HLG-150H,IP67 x 2 1-10V Dimmable, 90-305V, PF>0.98 x2	
Optional Driver	MeanWell HLG-100 IP67,1-10V,Dimmable, 90-305V, PF>0.98	N/A	
Dimming	N/A (Standard driver) 1-10V (Optional driver)	1-10V	
Operation Temp.	-40°C~40°C, indoors and outdoors		
IP rating	IP66		
Beam Angles	15°/30°/50°/80°/90°/110° (90°/110° Optional), PC Lens		
Color Temp.	5700~6200K(CW)/4000~4400K(NW)/ 2900~3200K(WW)		
Dimensions	436x473x172mm (include standard bracket)		
Weight	12.8 kg	13.8 kg	14.8 Kg
Material	Die-cast Aluminum Heat-Sink, White/Black painting Tempered proof glass cover SPHC Bracket Stainless 30° Tilt bracket (Optional)		
Surge Protection	10KA SPD (120-277V or 347-480AC) Standard		
Smart Controlling	DALI supported via Meanwell DAP-04 DALI converter (optional) Bluetooth wireless supported via Neotroni BlueTech controller (optional)		
Warranty	5 Years, Life Span> =50,000 hrs		
COO	Made in Taiwan		
Certification	cUL/CE/CNS/DLC/Lighting Facts, ROHS		

Remarks


- 1.The tolerance of luminous flux is ±10%.
- 2.The dimension tolerance is ±5mm.
- 3.The appearance and specifications of the product may be modified for improvement without notice.
- 4.All parameters of products are based on the measurement of Laster Tech laboratory.



LON-ECO Professional Compact Series

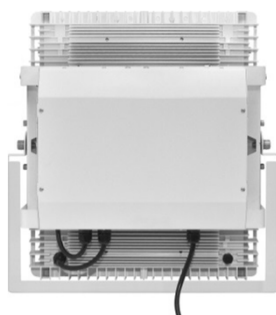
200W~280W
 Up to 110 lm/w, (200W ≥ 120lm/w)
 Smart control available

LON-ECO Professional Series(200W/220W/250W/280W)

Model	LON-E10C200SNxxxx8	LON-E10C220SNxxxx8	LON-E10C250SNxxxx8	LON-E10C280SNxxxx8
System Watts	200W±3%	220W±3%	250W±3%	280W±3%
LED Chips				
CRI	≥70 (Cool White), > =80 (Warm White)			
LED nos.	96pcs	96pcs	112pcs	128pcs
Total Luminous flux (Cool white)	≥24,000 lm ≥ 120 lm/w	≥24,200 lm ≥ 110 lm/w	≥27,500 lm ≥ 110 lm/w	≥30,800 lm ≥ 110 lm/w
Driver	MeanWell HLG-240H, 90~305V AC, IP67,1-10V Dimmable, PF>0.98 x1			MeanWell HLG-320H 90~305V AC, IP65/IP67,1-10V Dimmable (IP65), PF>0.98 x1
Optional Driver	MeanWell HVG-240H, 180-518V AC, IP67, 1-10V Dimmable, PF>0.98 x1			MeanWell HVG-320H, 180-518V AC, 1-10V x1
Dimming	1-10V			
Operation Temp.	-40°C~40°C, indoors and outdoors			-40°C~40°C, outdoors
IP rating	IP66			
Beam Angle	15°/30°/50°/80°/90°/110° (90°/110° Optional), PC Lens			
Color Temp.	5700~6200K(CW)/4000~4400K(NW)/ 2900~3200K(WW)			
Dimensions	439x260x172mm (include standard bracket)			
Weight	8.0 Kg	8.0 Kg	8.2 Kg	8.4 Kg
Material	Die-cast Aluminum Heat-Sink, White/Black painting Tempered proof glass cover SPHC Bracket Stainless 30° Tilt bracket (Optional)			
Surge Protection	10KA SPD (120-277V or 347-480V AC) Standard			
Smart Controlling	DALI supported via Meanwell DAP-04 DALI converter (optional) Bluetooth wireless supported via Neotroni BlueTech controller (optional)			
Warranty	5 Years, Life Span> =50,000 hrs			
COO	Made in Taiwan			
Certification	cUL/CE/CNS/DLC/Lighting Facts, ROHS			


Remarks

- 1.The tolerance of luminous flux is ±10%.
- 2.The dimension tolerance is ±5mm.
- 3.The appearance and specifications of the product may be modified for improvement without notice.
- 4.All parameters of products are based on the measurement of Laster Tech laboratory.



LON-ECO Professional Twin Series

420W/560W
Up to 110 lm/w
 Smart control available

LON-ECO Professional Twin Series (420W/560W)		
Model No.	LON-E10C420SNxxxx8	LON-E10C560SNxxxx8
System Watts	420W±3%	560W±3%
LED Chips		
CRI	≥70 (Cool White), >=80 (Warm White)	
LED nos.	192pcs	256pcs
Total Luminous flux (Coolwhite)	≥46,200 lm ≥ 110 lm/w	≥61,600 lm ≥ 110 lm/w
Driver	MeanWell HLG-600H 90~305V AC, IP67, 1-10V Dimming, PF>0.98 x1	
Optional Driver	MeanWell HVG-320H, 180~518V AC, IP67, 1-10V Dimming, PF>0.98 x2	
Dimming	1-10V	
Operation Temp.	-40°C~40°C, indoors and outdoors	-40°C~40°C, outdoors
IP rating	IP66	
Beam Angles	15°/30°/50°/80°/90°/110° (90°/110° Optional), PC Lens	
Color Temp.	5700~6200KK(CW)/4000~4400K(NW)/ 2900~3200K(WW)	
Dimensions	436x473x172mm (include standard bracket)	
Weight	17.8 kg	18 Kg
Material	Die-cast Aluminum Heat-Sink, White/Black painting Tempered proof glass cover SPHC Bracket Stainless 30° Tilt bracket (Optional)	
Surge Protection	10KA SPD (120-277V or 347-480V AC) Standard	
Smart Controlling	DALI supported via Meanwell DAP-04 DALI converter (optional) Bluetooth wireless supported via Neotroni BlueTech controller (optional)	
Warranty	5 Years, Life Span>=50,000 hrs	
COO	Made in Taiwan	
Certification	cUL/CE/CNS/DLC/Lighting Facts, ROHS	


Remarks

- 1.The tolerance of luminous flux is ±10%.
- 2.The dimension tolerance is ±5mm.
- 3.The appearance and specifications of the product may be modified for improvement without notice.
- 4.All parameters of products are based on the measurement of Laster Tech laboratory.



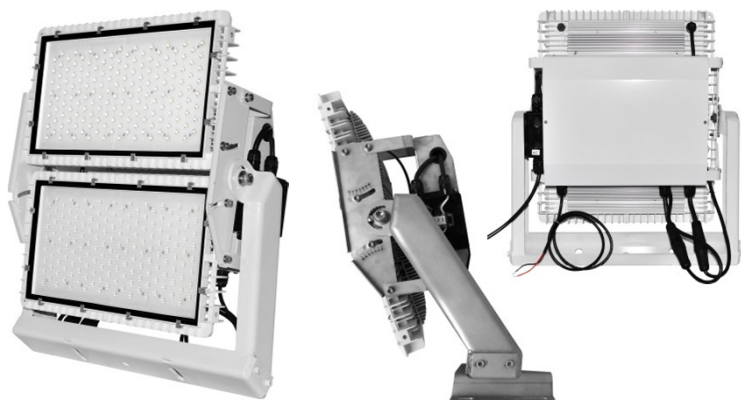
LON-ECO Advanced Compact Series

200W~280W
 Support 180-518V AC
 Up to 130 lm/w
 Smart control available

LON-ECO Advanced Series(200W/220W/250W/280W)			
Model	LON-E10C220SNxxxx8	LON-E10C250SNxxxx8	LON-E10C280SNxxxx8
System Watts	220W±3%	250W±3%	280W±3%
LED Chips			
CRI	≥70		
LED nos.	128pcs	144pcs	160pcs
Total Luminous flux (Cool white)	≥28,600 lm ≥ 130 lm/w	≥32,500 lm ≥ 130 lm/w	≥36,400 lm ≥ 130 lm/w
Driver	MeanWell HLG-240H, 90~305V AC, IP67,1-10V Dimmable, PF>0.98 x1		MeanWell HLG-320H 90~305V AC, IP65/IP67,1-10V Dimmable (IP65), PF>0.98 x1
Optional Driver	MeanWell HVG-240H, 180-518V AC, 1-10V x1		MeanWell HVG-320H, 180-518V AC, 1-10V x1
Dimming	1-10V		
Operation Temp.	-40°C~40°C, indoors and outdoors		-40°C~40°C, outdoors
IP rating	IP66		
Beam Angle	15°/30°/50°/80°/90°/110° (90°/110° Optional), PC Lens		
Color Temp.	5700~6200K(CW)/4000~4400K(NW)/ 2900~3200K(WW)		
Dimensions	439x260x172mm (include standard bracket)		
Weight	8.4 Kg	8.6 Kg	8.8 Kg
Material	Die-cast Aluminum Heat-Sink, White/Black painting Tempered proof glass cover SPHC Bracket Stainless 30° Tilt bracket (Optional)		
Smart Controlling	DALI supported via Meanwell DAP-04 DALI converter (optional) Bluetooth wireless supported via Neotroni BlueTech controller (optional)		
Warranty	5 Years, Life Span> =50,000 hrs		
COO	Made in Taiwan		
Certification	cUL/CE/CNS/DLC/Lighting Facts, ROHS		


Remarks

- 1.The tolerance of luminous flux is ±10%.
- 2.The dimension tolerance is ±5mm.
- 3.The appearance and specifications of the product may be modified for improvement without notice.
- 4.All parameters of products are based on the measurement of Laster Tech laboratory.



LON-ECO Advanced Twin Series

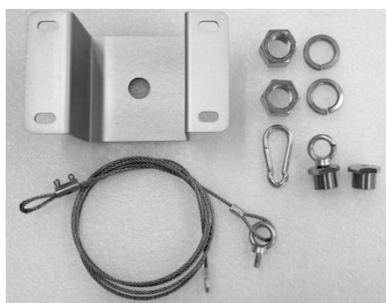
420W~560W
 Support 180-518V AC
 Anti-Corrosion, Anti-Vibration
 Up to 130 lm/w
 Smart control available

LON-ECO Advanced Twin Series (420W/560W)		
Model No.	LON-E10C420SNxxxx8	LON-E10C560SNxxxx8
System Watts	420W±3%	560W±3%
LED Chips		
CRI	≥70	
LED nos.	256pcs	320pcs
Total Luminous flux (Coolwhite)	≥54,600 lm ≥ 130 lm/w	≥72,800 lm ≥ 130 lm/w
Driver	MeanWell HLG-600H 90~305V AC, IP67, 1-10V Dimming, PF>0.98 x1	
Optional Driver	MeanWell HVG-320H, 180~518V AC, IP67, 1-10V Dimming, PF>0.98 x2	
Dimming	1-10V	
Operation Temp.	-40°C~40°C, indoors and outdoors	-40°C~40°C, outdoors
IP rating	IP66	
Beam Angles	15°/30°/50°/80°/90°/110° (90°/110° Optional), PC Lens	
Color Temp.	5700~6200KK(CW)/4000~4400K(NW)/ 2900~3200K(WW)	
Dimensions	480x510x220mm (include Tilt bracket)	
Weight	21 Kg	22 Kg
Material	Die-cast Aluminum Heat-Sink, White/Black PVDF painting Tempered proof glass cover Stainless 30° Tilt bracket, Anti-corrosion, Anti-Vibration Independent rotary modules with angle mark	
Surge Protection	10KA SPD (120-277V or 347-480V AC) Standard	
Smart Controlling	DALI supported via Meanwell DAP-04 DALI converter (optional) Bluetooth wireless supported via Neutroni BlueTech controller (optional)	
Warranty	5 Years, Life Span ≥ 50,000 hrs	
COO	Made in Taiwan	
Certification	cUL/CE/CNS/DLC/Lighting Facts, ROHS	

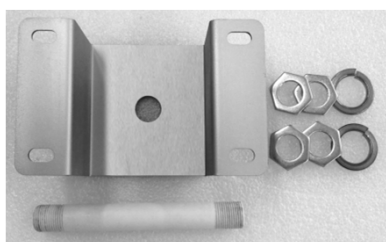
Remarks

- 1.The tolerance of luminous flux is ±10%.
- 2.The dimension tolerance is ±5mm.
- 3.The appearance and specifications of the product may be modified for improvement without notice.
- 4.All parameters of products are based on the measurement of Laster Tech laboratory.

Despite bracket for wall mount, LON-ECO offers other accessories for different purpose. Ex: Pendant, Stem for Hi-bay and pole clamp, even customer-design accessories for special requirement.



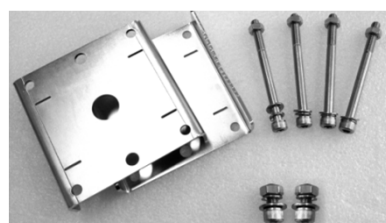
For Hi-bay	AS-W01
Contents	1. Stainless ceiling mount base x1 2. Stainless cable, length adjustable x1 3. Standard cable length 1.2M, customer made length is available
Purpose	Pendant for Hi-Bay



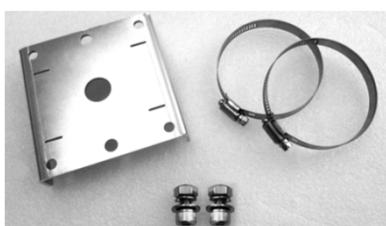
For Hi-bay	AS-S01
Contents	1. Stainless ceiling mount base x1 2. SPCC tube x1 3. Standard tube length 1.2M, customer made length is available
Purpose	Stem for Hi-Bay



For Hi-bay or Others	AS-D01
Contents	1. Stainless cable, adjustable x1 2. Standard length 1.2M, customer made length is available
Purpose	Anti-drop cable for ceiling mount



For Clamp on Pole	AS-C01
Contents	1. Stainless Pole Clamp set x2 2. Stainless long screws 3. Supporting pole diameter: 30mm~80mm
Purpose	Pole Clamping



For Clamp on Pole	AS-C01
Contents	1. Stainless Pole Clamp set x1 2. Stainless Clamping Belt x2 3. Supporting pole diameter: 25mm~82mm
Purpose	Pole Clamping



DALI Ready

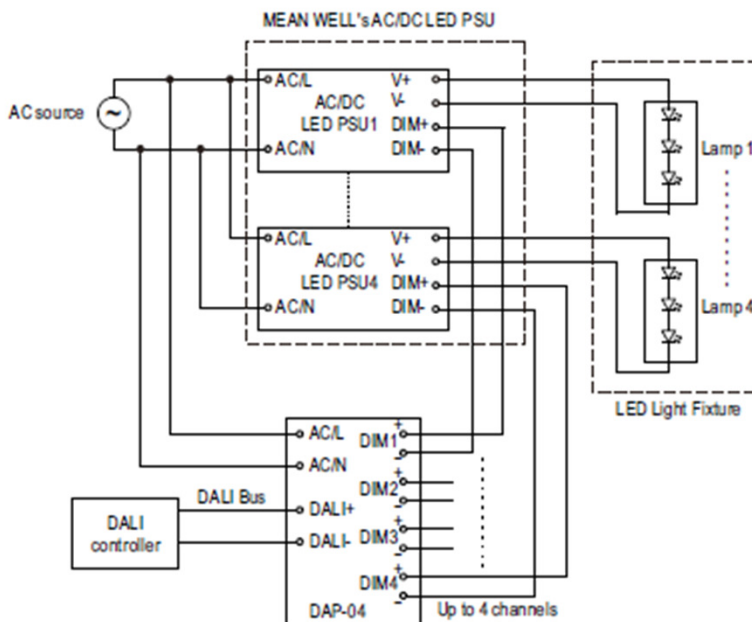
LON-ECO series supports DALI (Digital Addressed Lighting Interface) control via DAP-04 DALI-PWM converter. (optional)



DAP-04 has 4 DALI channels can connect with MeanWell 3 in 1 dimming line to do PWM dimming control. Its scalable connections expand its application to many kinds of scenarios.

The dimming range can be between 1%~100% (suggested not lower to 3% to prevent from LED flickering)

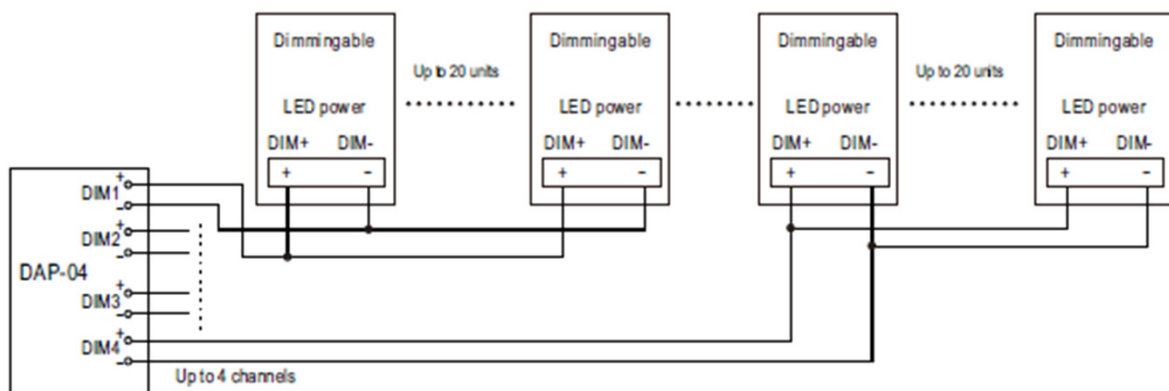
DALI Dimming Control Mode



You can use PC or 3rd Party DALI controller via DALI Bus to control every LON-ECO via DAP-04. In this drawing, each DIM# connect one LON-ECO LED driver with 1-10V cable.

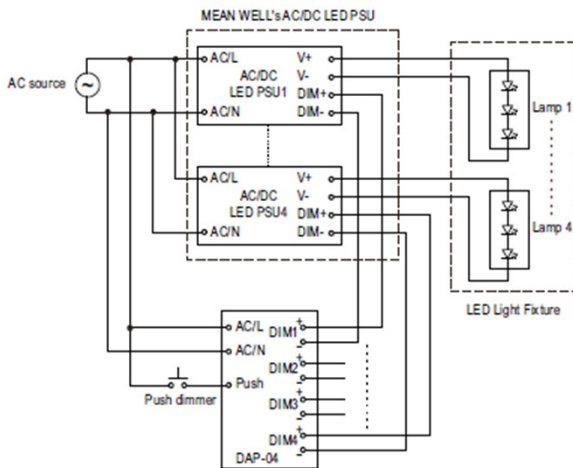
Furthermore, it is able to let each DIM# to connect multiple LON-ECO 1-10V cable in parallel to achieve "Synchronous controlling".

Synchronous connection





Push Dim Mode



※Note: Only use Normally Open Push Button without light indicator .

Dimming control mechanism

Function	Pushing time
No change of state	<0.05 sec
Turn ON/OFF	0.1~1 sec
Dimming up or down	1.5~10 sec
Setting light to 100%	>11 sec

- Every long pushing action will change the dimming direction.
- Factory default dimming setting : 100%

Under Push Dim mode, it is able to dim LON-ECO via only a Open Push Button without connecting with outer DALI controller and software.

It is also suitable to connect using “Synchronous connection” to control up to 80pcs LON-ECO via only one DAP-04.

Dimming with Automatic Relay ON/OFF

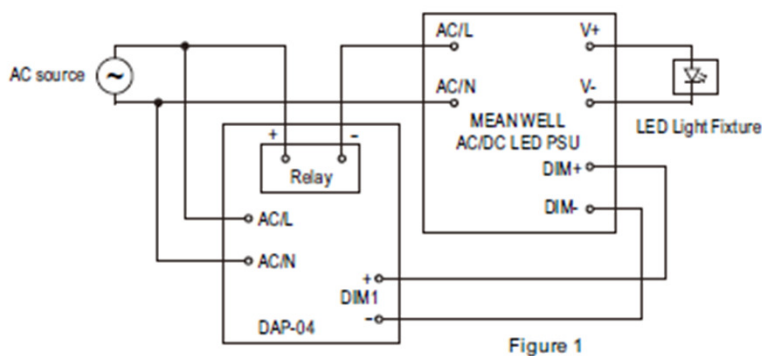


Figure 1

It is possible to turn LON-ECO ON/OFF automatically according to if there is dimming signal.

It means you don't need to control the ON/OFF in the software or via a switch. DAP-04 built in a relay can be connected with LON-ECO AC input together, when there is a dimming signal, the LON-ECO will be automatically turn ON, and when there is no signal, the light will turn OFF automatically.



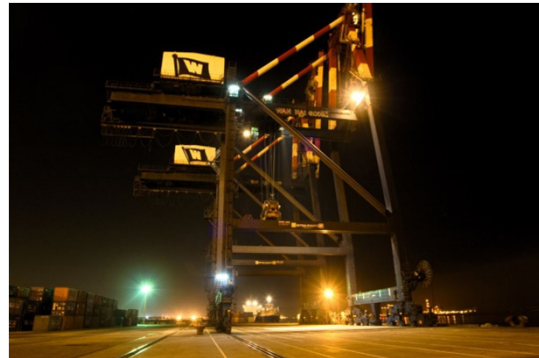
Indoors or outdoors professional stadium



Factory / Warehouse



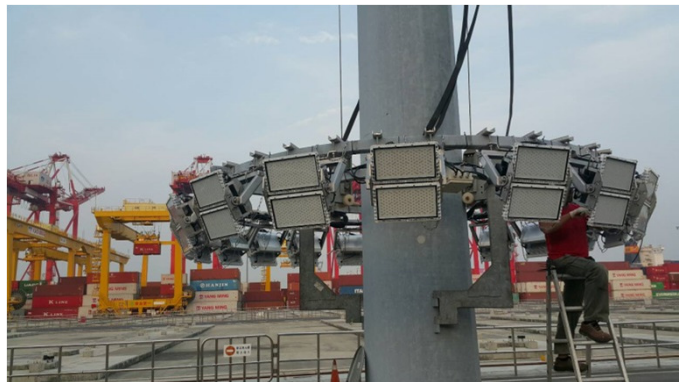
Gymnasium



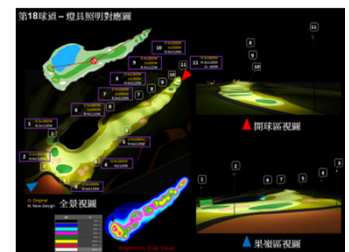
Heavy Duty Machine lighting



Pole light in Airport / Dock /Logistics Center



Long Distance Professional Lighting



Golf course & other practice range