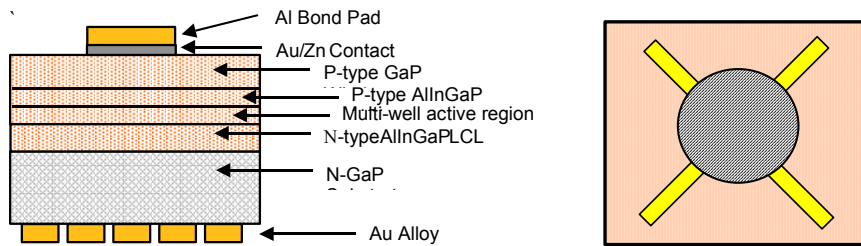


Lumileds P4 Series LED Chips

Technical Data DS42

The P4 series chips are a transparent substrate AllnGaP chip delivering high-flux performance.

Outline Drawings



Optoelectric Parameters

PART NUMBER	COLOR	MAX DRIVE CURRENT	DOMINANT WAVELENGTH (λ.D. nm)			INTENSITY (Iv, mcd)		
			MIN.	TYP.	MAX.	MIN.	TYP.	MAX.
HWFR-B317	AMBER	150mA	585	590	595	110	160	--
HWFR-B417	RED-ORANGE	150mA	612	618	625	200	300	--
HWFR-B517	RED	150mA	618	626	635	110	160	--

TEST CURRENT = 10mA TEST CURRENT = 40mA

PART NUMBER	COLOR	TEST CURRENT	FORWARD VOLTAGE (VF, V)		REVERSE VOLTAGE (VBR, V) @ 100µA
			TYP.	MAX.	Min.
HWFR-B317	AMBER	40mA	2.3	3.0	-6.0
HWFR-B417	RED-ORANGE	40mA	2.3	3.0	-6.0
HWFR-B517	RED	40mA	2.3	3.0	-6.0

Mechanical Dimensions

MECHANICAL DIMENSIONS	CHIP PRESENTATION
CHIP SIZE	12 X 12 MILS
JUNCTION AREA	12 X 12 MILS
CHIP THICKNESS	10.5 +/- 1.5 MILS
TOP METAL	AL/AUZn
BACK METAL	AU/GE
	CHIPS ARE SAMPLE TESTED FOR IV, COLOR, 100% TESTED FOR VF AND VR, DICED, VISUALED, AND MOUNTED ON SIX INCH PHOTON RINGS.

Benefits

- Fewer LEDs Required
- Lowers Lighting System Cost

Features

- High Luminous Flux
- Higher Forward Current Operation Capability

Typical Applications

- Signs/Signals
- Machine Vision
- Automotive Lighting
- Illumination

Company Information

Lumileds is a world-class supplier of Light Emitting Diodes (LEDs) producing billions of LEDs annually. Lumileds is a fully integrated supplier, producing core LED material in all three base colors (Red, Green, Blue) and White. Lumileds has R&D development centers in San Jose, California and Best, The Netherlands. Production capabilities in San Jose, California and Malaysia.

Lumileds is pioneering the high-flux LED technology and bridging the gap between solid state LED technology and the lighting world. Lumileds is absolutely dedicated to bringing the best and brightest LED technology to enable new applications and markets in the Lighting world.



©2003 Lumileds Lighting, U.S. LLC. All rights reserved. Luxeon is a trademark of Lumileds Lighting, U.S. LLC. Product specifications are subject to change without notice.

Lumileds may make process or materials changes affecting the performance or other characteristics of our products. These products supplied after such changes will continue to meet published specifications, but may not be identical to products supplied as samples or under prior orders.

LUMILEDS

www.luxeon.com
www.lumileds.com

For technical assistance or the location of your nearest Lumileds sales office, call:

Worldwide:
+1 408-435-6044
Fax: 408-435-6855
US Toll free: 877-298-9455
Asia: +60 4680 5342
Europe: +31 499 339 439
Email us at info@lumileds.com

Lumileds Lighting, LLC
370 West Trimble Road
San Jose, CA 95131